

Tillie Anderson

World Champion

Ladies Six-day
Bicycle Races
1895-1902

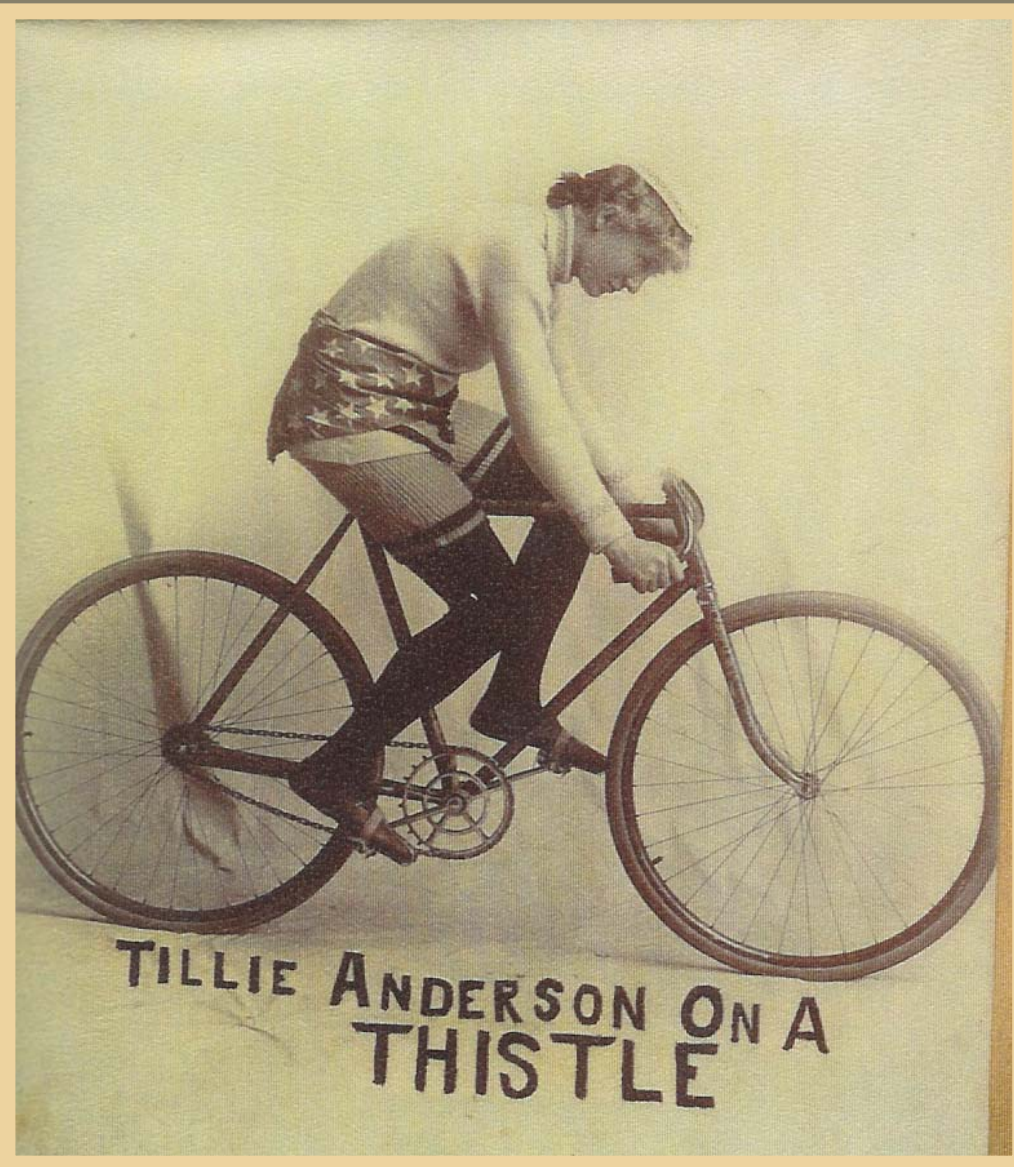


Tillie:
Prior to
a Race



Tillie
Rides a
Thistle





TILLIE ANDERSON ON A
THISTLE



Tillie
Anderson

On A
Thistle

The Thistle logo

The Thistle

TELEPHONE MAIN 455.



ALSO A FULL LINE OF
**MEDIUM GRADE
CYCLES.**

EXCELSIOR SUPPLY CO.
GEO. T. ROBIE, Pres't.

SUPPLIES OF ALL KINDS.

276-278 WABASH AVE.,
COR. VAN BUREN ST.

Chicago,

Tillie's
Endorsements
included
The Thistle
and
Morgan &
Wright Tires

The Undisputed Champion

TILLIE ANDERSON



Ask Tillie about

The Thistle

She Rides it Always.

Ask Tilley



About *The Thistle*

How to Reach

THE —————

Parks of Chicago

AND



SALESROOM ❁ ❁ ❁

73 Jackson

...CHICAGO

Near State...

GEO. A. KNAPP, MGR.

Dual Citizenship

Tillie
Represents
Sweden and
America at
the races in
1895



Typical Racing Uniform



Form No. 168.

You'll own the town!

THE WESTERN UNION TELEGRAPH COMPANY.

INCORPORATED

21,000 OFFICES IN AMERICA. CABLE SERVICE TO ALL THE WORLD.

This Company TRANSMITS and DELIVERS messages only on conditions limiting its liability, which have been assented to by the sender of the following message. Errors can be guarded against only by repeating a message back to the sending station for comparison, and the Company will not hold itself liable for errors or delays in transmission or delivery of Unrepeated Messages, beyond the amount of tolls paid thereon, nor in any case where the claim is not presented in writing within sixty days after the message is filed with the Company for transmission.

This is an UNREPEATED MESSAGE, and is delivered by request of the sender, under the conditions named above.

THOS. T. ECKERT, President and General Manager.

232

RECEIVED at Minneapolis, Minn.

Standard Time.

Ch 186 Ke. Y. 10 Paid

4:24 p

Chicago, Feb 29-96

Miss Tillie Anderson,
Hotel Nicollet.

Keep up courage you'll own the town if you win.

Excelsior Supply Co.

Rules of the Chicago Race

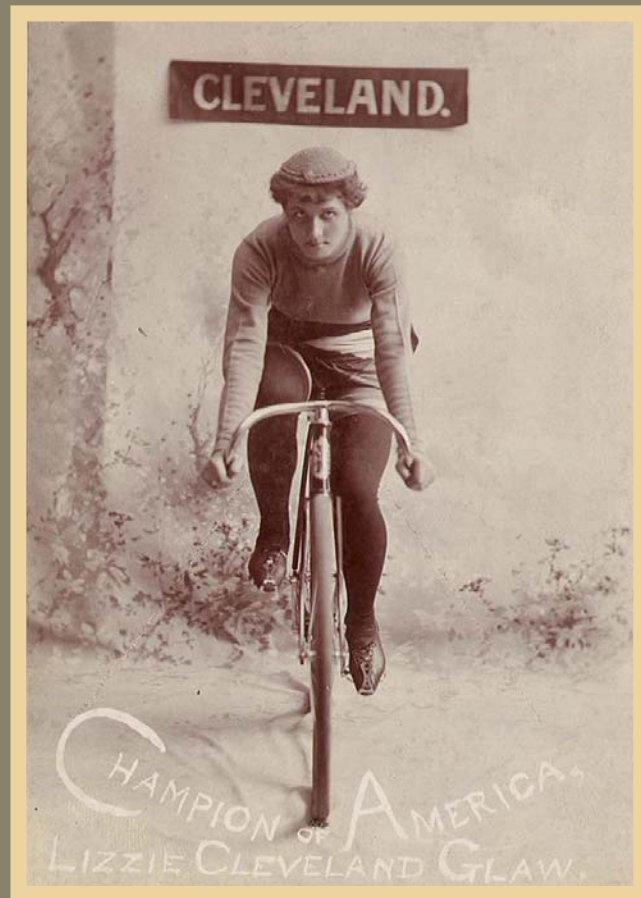
Rules Chicago Race.

- 1 Referee shall have complete charge of the race the moment same is started and his decisions shall be final.
- 2 Referee will be assisted by two or more Judges who will be placed on different points of track and no decision will be made until all the Judges have reported to the Referee, regarding fouls etc., etc.
- 3 Race will start promptly at 8.30 P. M., and continue for *one* hour straightway.
- 4 Each contestant is allowed two attendants on inside of track, and all riders must be ready at least 15 minutes before race begins.
- 5 Each night's race shall be a finish; riders scoring by points, according to positions at finish; first scoring 7 points, second 6 and so on; contestant getting greatest number of points in week wins race. *no rider can win unless she finishes 1st at least two*
- 6 Swearing or any unsportsman like conduct will not be tolerated.
- 7 Riders fouling or interfering in the least particular with any other contestant so as to jeopardise their chances of winning, shall be fined not to exceed \$10. or placed back, or both at the option of the Referee and Judges.
- 8 The leading rider shall at all times hold the pole and at the finish particularly so; should leader swing above upper black line in the last ten minutes of race it will be called a foul and she will be liable to above punishments.
- 9 Backpedeling with intentions of throwing following riders will be subject to fine etc., as above.
- 10 All riders must pass on outside in taking lead and must be at least 6 feet ahead before taking the pole.
- 11 Cutting on inside will not be permitted when leader is riding within her prescribed limits of track; riders cutting in do so at their own risk and should they be thrown all blame rests on themselves.

Clara Drehmel



Lizzie Glaw



Dottie
"Dayton"
Farnsworth



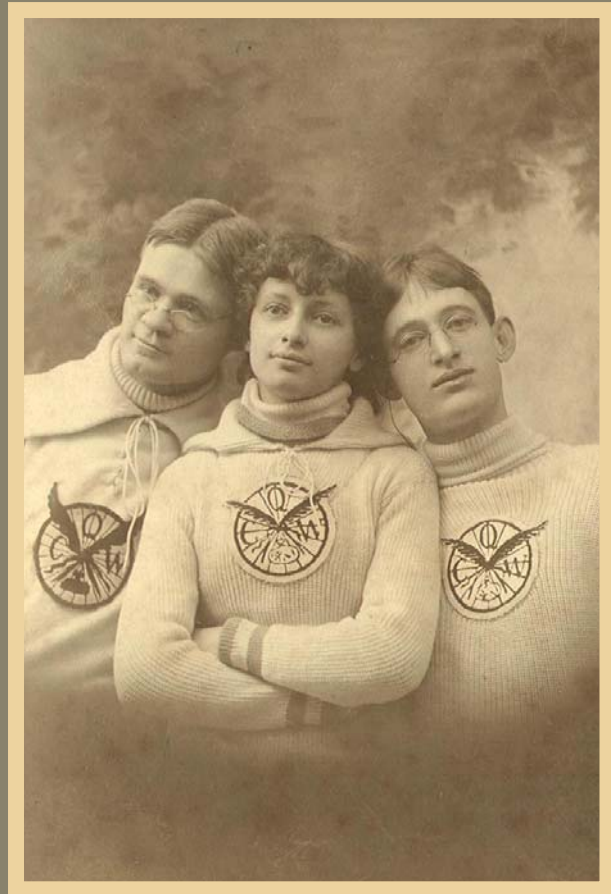
Lisette



Mlle. Lisette



Helen Baldwin



Helen Baldwin



Bertha
Wagner



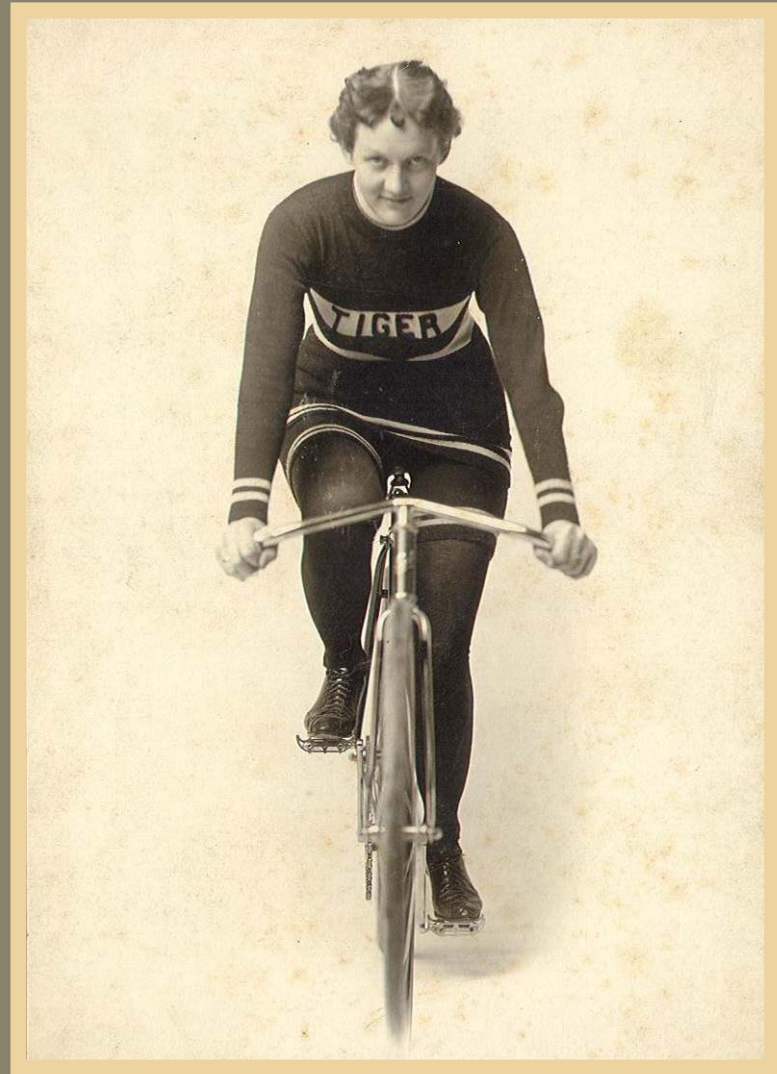
Frankie
Nelson



Ida
"Pete"
Peterson



Ida Peterson



Lillie
Williams



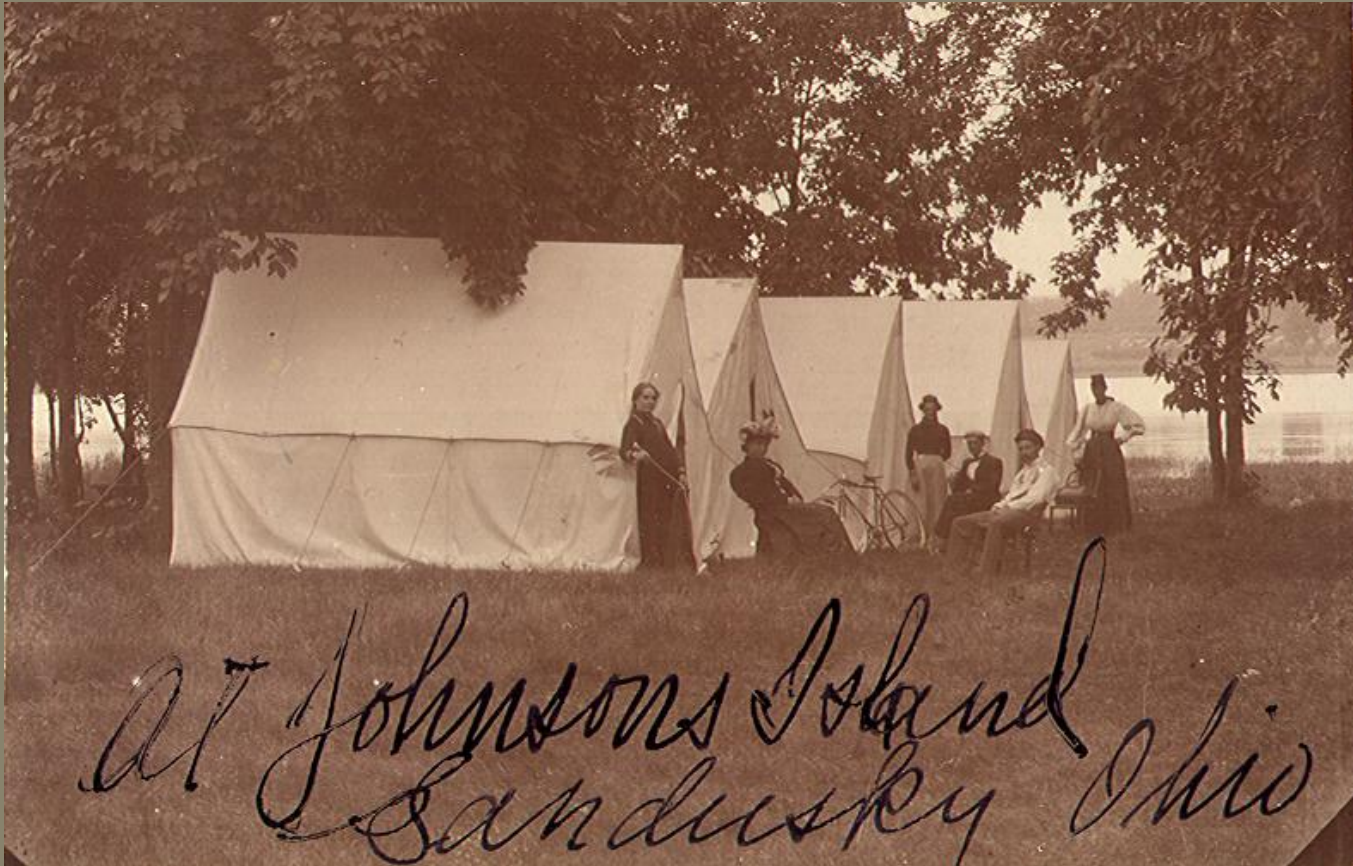
Mate Christopher



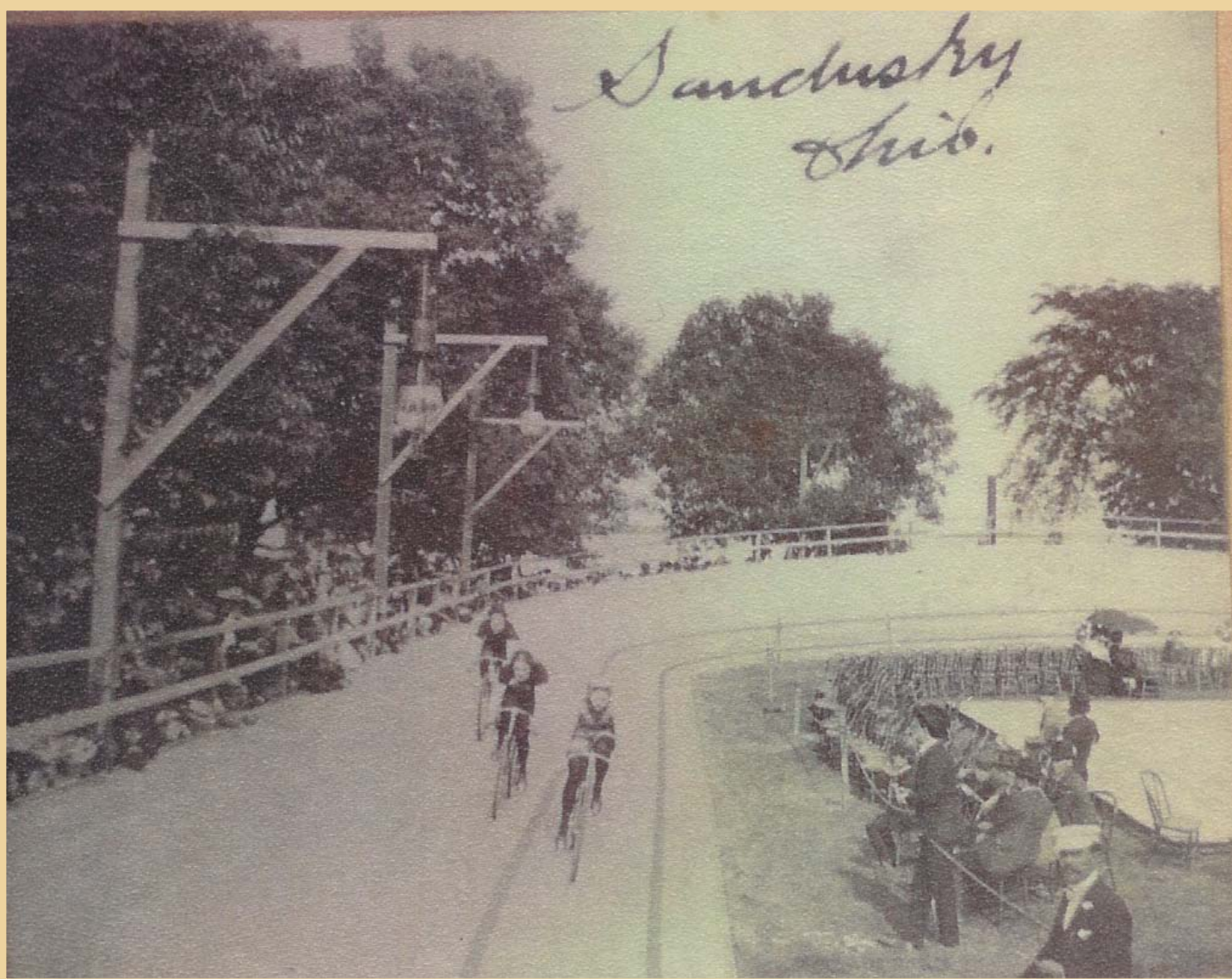
at top speed. in 1897



Dressing Tents



Sanctus by
Ohio.



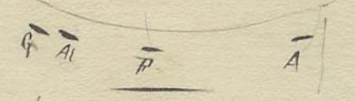
Scorer's notes

1897 Miss Nellie Anderson.

Feb 1st

Last three laps.

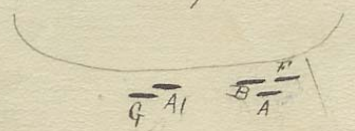
$$9 - 9 - 9 = 27$$



2nd

Last three laps.

$$9 - 9\frac{3}{5} - 9\frac{2}{5} = 28$$

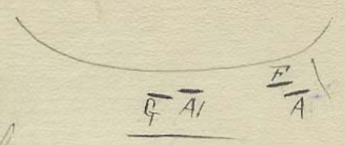


3rd

100 miles - 5 hr 21 min

Last three laps.

$$9 - 9\frac{3}{5} - 9\frac{2}{5} = 28$$



4th

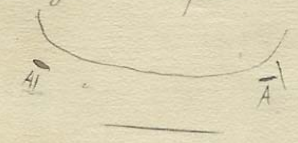
5th

1 Mile = 2⁴/₃

Half hr 10 Miles.

Last 3 laps 26⁴/₅

10⁰⁰ pure put up by Ex Geo Bradleys son to first tonight.



6th

200 Miles

10 hr - 34^M - 45^S

Last 3 laps

$$9 - 8\frac{3}{5} - 8\frac{2}{5} = 26\frac{3}{5}$$

2 hrs 38^M 6^S

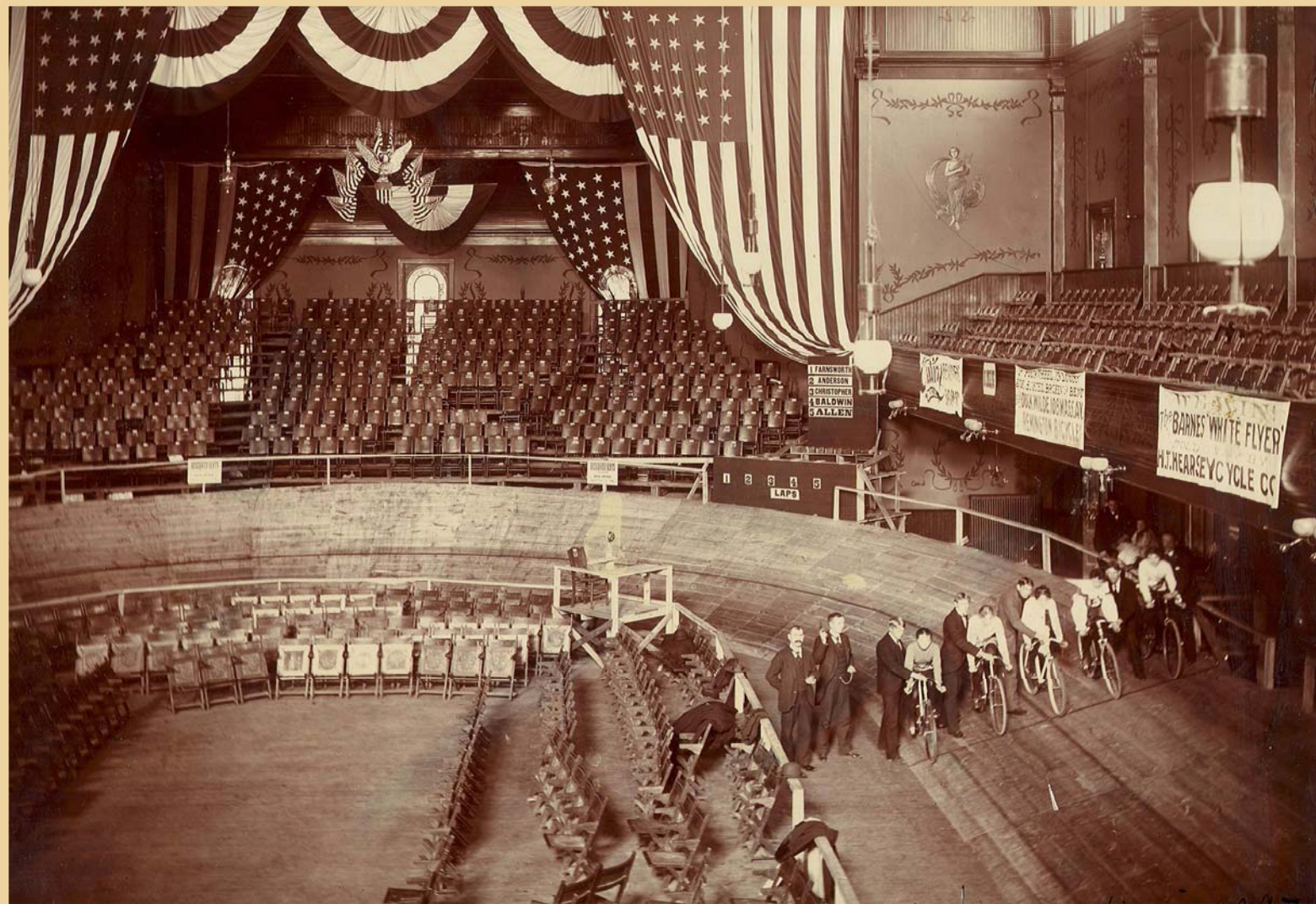
12 " 226^M 5^S



Lining up for the Start Cleveland - 1897



Indianapolis Velodrome



A whiz, a whir, a dazzling
blur, A flash of yellow
hair,
A firm set face, A whirlwind
pace, A wheel that splits
the air.

Too slow our eyes, So fast she
flies around the tilted
curve,
With wheel acant at dizzy
slant, to catch the swooping
curve.

With swooping swerve, how cool
her nerve,
She swings into the lead.
She holds her place in maddest
race, as tireless as her
steed.

The goal in sight, how wild her
flight and how our senses
real, to see the rush and
hear the hush, When Tillie
rides her Wheel.



Socializing between races



In an interview for a St. Louis newspaper, Tillie states:

◆ “I did not take to the wheel for my health, particularly. I suppose it was more for the reason that bicycles were being used by women and I wanted to try the fad. From the start I have been in love with wheeling. I was very weak when I began, but now I never suffer from pains and aches, as most women do.

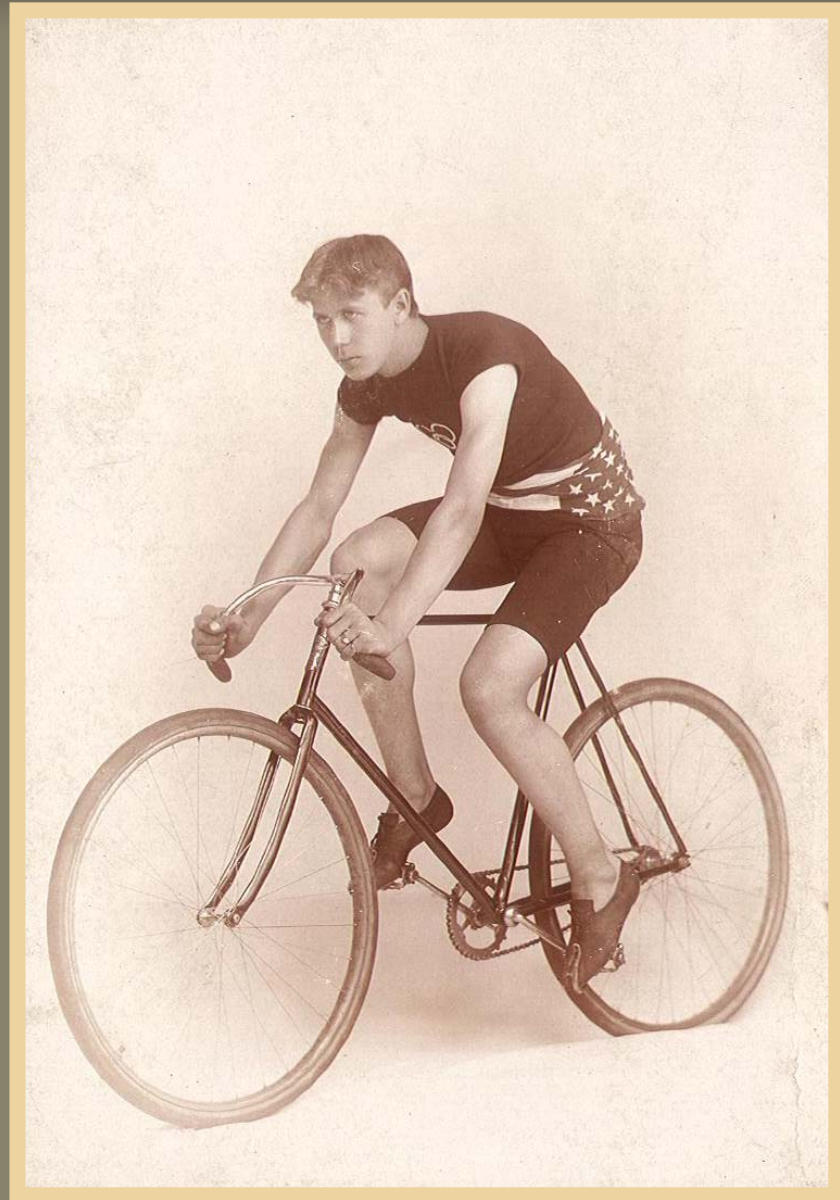
◆ “I think it is a delightful sport and the best possible exercise, though I regularly practice club-swinging, dumb-bell lifting, a little boxing, take lots of outdoor exercise and look after my health as best I can...”

◆ "Three years ago I was very fat in the legs, almost as much so as Miss Peterson, one of my competitors in the St. Louis race, is today. My muscles were not at all developed, though it was but a short time when the fat began to peel off and give way to sinewy strength. My abdominal and arm muscles also developed rapidly, and I have a peculiarly prominent one in the back, due I think, to bending over the wheel."

◆ “It does not fatigue me in the least to take part in these long-distance races, and I am just as fresh after a two-hour’s run as when I commence,” and her appearance bore out her statement. It was just after she had won a great victory at the Coliseum that she received The Republic representatives.

-- *Tillie Anderson*
The St. Louis Republic,
Sunday, December 12, 1897

J.
Philip
Shoberg



Tillie and
Phil
Shoberg
marry
in
December
of 1897



Hartley's

*309 W. Madison St.
CHICAGO.*

“Bicycle Racing Transforms
Lovely Woman
From A Pale Beauty Into
A Perfect Fright”

-- *The St. Louis Post-Dispatch*
December 5, 1897

BICYCLE RACING TRANSFORMS LOVELY WOMAN FROM A PALE BEAUTY INTO A PERFECT FRIGHT.

*Dr. George L. Kearney and Mrs. Frazer Deprecate
the Practice of Bicycle Riding as a
Profession for Girls.*

*The Women Themselves Admit That They Will Break
Down, but They Are Determined to Race
for the Money They Win.*



The Denunciation of Bicycle Races for Women

*By Mrs. Martha Frazer, Matron at the Union Depot,
St. Louis, Missouri:*

"The riders dashed by at a frightful speed. I shuddered. Their bodies were bent almost double. I wondered when they would stop. When I learned that these young women subject themselves to such tests of endurance for money, I was grieved. It pained me to see them forfeiting health for gain in such a way. I was almost tempted to say: "They are selling their body and soul." Such a strain is bound to wreck the body. God intended women to be better than horses."

A physician's denunciation

By George L. Kearney, M. D.. St. Louis Missouri, 1897

To the editor of the Sunday Post-Dispatch:

"The physical and mental strain is tremendous. A woman's vital organs are much more quickly affected than a man's by any violent or unusual strain. It is very easy to induce disorders which may become chronic. These women are bound to be injuriously affected by the close mental application, the great anxiety and physical exertion, which I think is greater than in any other form of athletics. Enlargement of the heart is produced, which may end fatally. Physical collapse is sure at the end of each race."

The Republican-Gazette,
DAILY AND SEMI-WEEKLY.

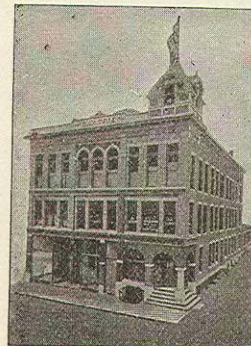
W. A. AND H. D. CAMPBELL,
EDITORS AND MANAGERS.

PHONES 86. 122 E. HIGH ST.

Lima Gazette, Established 1852.

Lima Republican, Established 1877.

Consolidated 1891.



Lima, Ohio, AUGUST 29th. 1900.

To Miss Tillie Anderson:

So seldom does it occur with "Professional People", may it be especially said of the feminine, that they come into a city, stay any length of time and go away with the good wishes and feelings of gratitude and respect, which accompany you to your succeeding victories. With each consecutive prize you won, the esteem of an admiring throng was an additional trophy. An accomplishment, indeed.

Yours, very cordially

Winfield S. Freeman
NEWS EDITOR

It's
True...
Fashion
travels
in Cycles





Touring suit

Tillie Anderson, 1897

By 1897, bloomers were a common sight, as were women on bicycles. Less common were ladies lining up for races, though Tillie Anderson, pictured here with medals pinned to her lapels, was the country's most famous female champion when this picture was made around 1897.

*--The American Bicycle
Jay Pridmore & Jim Hurd
1995*



Grace,
Style
and
Beauty





Sweet's

on
CAMPAU SQUARE
in
Grand Rapids, Michigan

In 1897, one of Sweet's most famous guests was Tillie, The Terrible Swede, "fastest bicyclist of her sex", who turned heads when she gave a racing exhibition on Ionia near the Union Depot. In 1898, Sweet's became The Pantlind, which still hosts celebrities, though few as dashing as Tillie.

McConnell

Independent and Courageous



A lifelong love of cycling





At reunion of 19th century bicyclists yesterday at Sportsman's Golf club. Picture at left: Ald. J. B. Bowler (left), former 6 day rider; J. P. Bliss, a champion of the '90s, on high wheel cycle of the '80s, and A. H. Stewart (right). Picture at right: Mrs. Tillie Shoberg, woman's champion in 1895, with modern racing cycle.

[TRIBUNE Photos.]

(Story on page 9.)

OCKI

Summer cottage in Northern Minnesota



Island Lake, Minnesota



Tillie's family:

Elinas & Emma
Anderson Grotnes,
Evelyn and Len

(Tillie, center)



Evelyn & Tillie in Scandinavia, 1956



Tillie
and Me
in 1963



***2000 US Bicycling
Hall of Fame Inductees***

**Veteran Pre-1945
Competitors Category**

TILLIE ANDERSON

US Bicycling Hall of Fame, Somerville, New Jersey

Thank you!



1896

Compliments of
Tillie Anderson